



VILLAGE MALL

LEASING BROCHURE




HARTBEESPOORT



ABOUT HARTBEESPOORT

Hartbeespoort, informally also known as “Harties”, is a town located in the North West province. Hartbeespoort lies in a valley to the south of the Magaliesburg mountain range and north of the Witwatersberg mountain range.

Hartbeespoort is about 35 kilometres north-west of Johannesburg and 20 kilometres west of Pretoria. The town consists of holiday homes and permanent residences around the dam as it is popular with visitors from nearby Gauteng.

ABOUT VILLAGE MALL

Village Mall officially opened its doors in October 2008 and in 2011 phase 2 was completed. This shopping centre is situated in Hartbeespoort and surrounded by the majestic Magaliesburg mountain range boasting with 62 stores providing easy and accessible shopping. Other than being located on a widely visible site next to the main road in Hartbeespoort, the moderate climate and natural features of the region have influenced the design of the centre.

Village Mall is approximately 23.757m² and has already cemented itself as the leading shopping experience in the area. The community of Hartbeespoort can enjoy a variety of retailers including national anchors such as Checkers, Clicks, Pick n Pay and Woolworths, complemented by fashion stores, including Ackermans, Foschini, Pick n Pay Clothing, Mr Price and Truworths.

Shoppers can enjoy an outside dining experience in our piazza with restaurants such as John Dory's, Panarotti's and Spur. Grab a quick bite from Mugg & Bean or McDonalds. Village Mall is a meeting place for the community of Hartbeespoort, a place where families and friends get together to shop, socialise and relax.

INDEX

INTRODUCTION Fast Facts	2
LOCATION MAP Macro, Micro, Site Location & Orientation Map	3-8
MALL MAP	9
MALL IMAGES	11

FAST FACTS

			
62 stores	23 757m² (GLA) total size	320 000 average shoppers per month	1 128 open & free parking




OTHER FACTS

Easy access from the main road

Direct access to all entrances

Comprehensive retail offering

Easy access to tourists attractions such as:

-  Hartbeespoort Aerial Cable Way
-  Chameleon Village
-  Hartbeespoort Dam Wall



OUR LOCATION: located on the R511 and Magalies Boulevard

ANCHOR TENANTS

Pick n Pay

Dis-Chem
PHARMACIES

W

Checkers
CLICKS

MACRO
LOCATION MAP

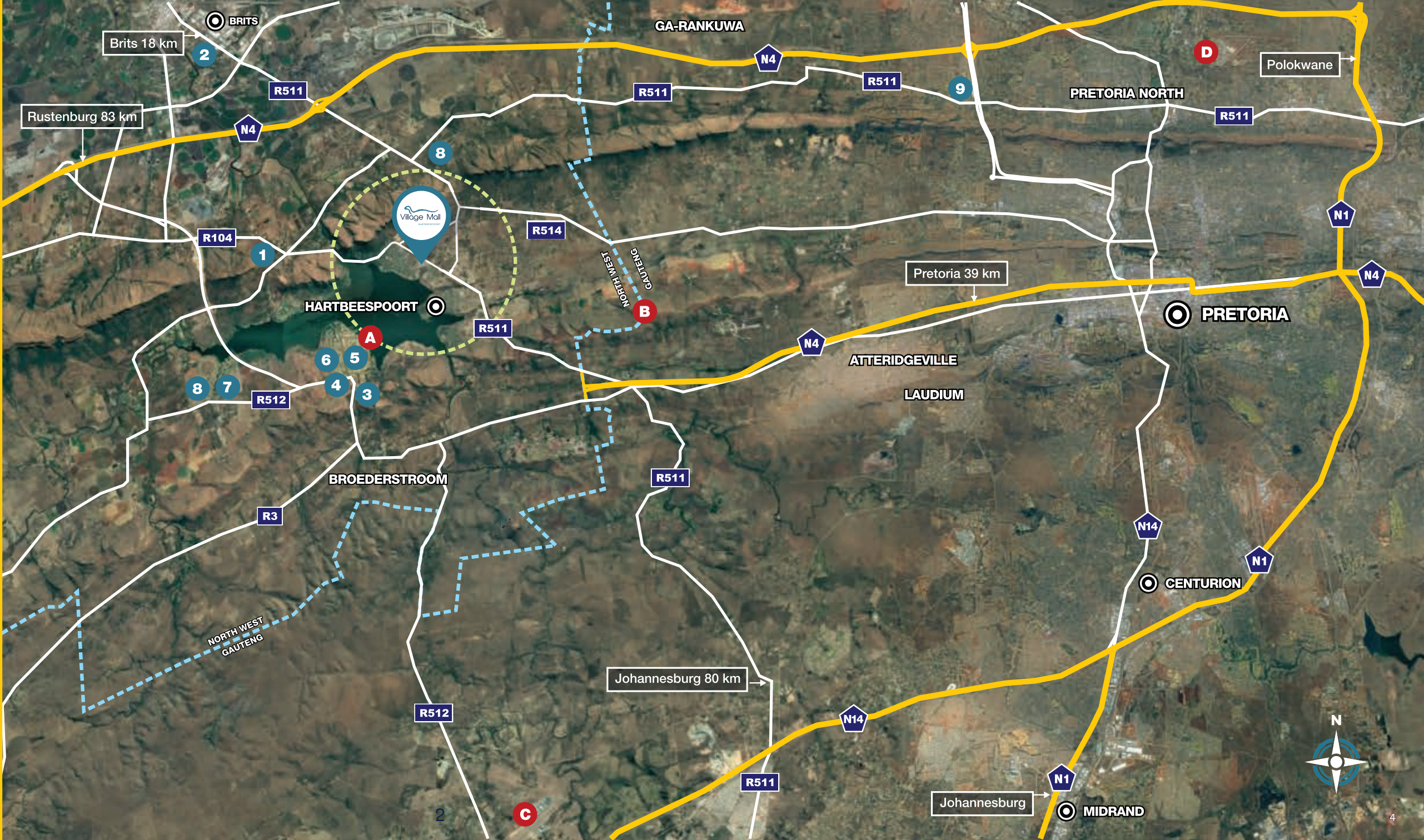
DISTANCES FROM
VILLAGE MALL

Brits	18 km
Pretoria	39 km
Johannesburg	80 km
Rustenburg	83 km

LEGEND

1	Chameleon Village	7 km
2	Brits Mall	18 km
3	Pecanwood College	21 km
4	The Islands Mall	22 km
5	Pecanwood Estate	23 km
6	The Islands Estate	23 km
7	Westlake Country & Safari Estate	28 km
8	The Coves	29 km
9	Wonderpark Shpping Centre	35 km

- A 5 km Radius
- B North West & Gauteng Province Border
- C Lanseria International Airport
- D Wonderboom Airport



MICRO
LOCATION MAP

OTHER RETAIL
IN THE AREA

- A

Sediba Plaza
(10,918m2)

2 km
- B

Jasmyn Farmers
Market

4,3 km

POINTS OF INTEREST

- 1

French Toast

1,8 km
- 2

Hartbeespoort
Aerial Cableway

2,8 km
- 3

Pretville

3,5 km
- 4

Hartbeespoort
Dam Wall

5 km

ESTATES

- 5

Birdwood Estate

3,1 km
- 6

La Camargue Estate

3,5 km
- 7

Xanadu Eco Park

4,3 km

SCHOOLS

PRIMARY SCHOOLS

- 8

Laerskool Generaal
Hendrik Schoeman

1,8 km

HIGH SCHOOLS

- 9

Hoërskool
Hartbeespoort

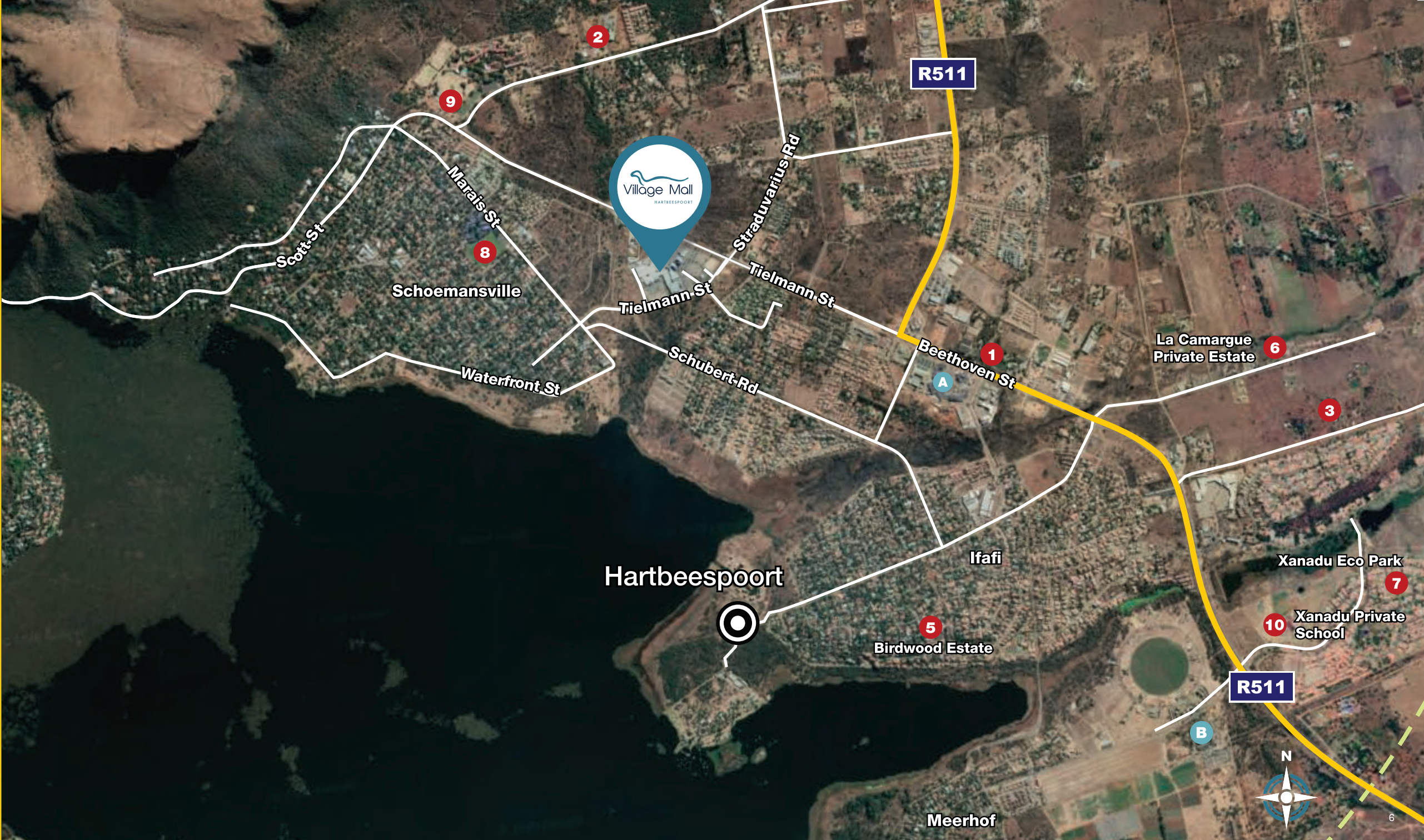
2,1 km

PRIVATE SCHOOLS

- 10

Xanadu Private
Schools

4,1 km



SITE LOCATION
ORIENTATION MAP

MAIN ROUTES
IN THE AREA

- 1 Tielmann St
- 2 Anaboom Cresnet

POINTS OF INTEREST

- A Entrance & exit to Village Mall via Tielmann St
- B Entrance & exit to Village Mall via Tielmann St
- C Entrance & exit to Village Mall via Tielmann St





MALL MAP

2 3 7 5 7 m² (GLA) TOTAL SIZE
Village Mall

STORE LISTING

AUDIO, CELLULAR & ELECTRONICS

- 126 Cell C
- 95 Cell Café
- 29 MTN
- 111 TBC
- 86 Telkom
- 93 Vodacom

BANKS, FOREX & FINANCIAL SERVICES

- 45 Absa
- 3 Capitec
- 106 First National Bank
- 104 Standard Bank
- 47 Nedbank

BOOKS & STATIONARY

- 63 TBC
- 18A Bargain Books

FASHION

- 128 Ackermans
- 21 Foschini
- 87 Markham
- 108 Miladys
- 19 Mr Price Clothing
- 23 Obriani Men
- 75 Obriani Women
- 12 PEP
- 114 Pick n Pay Clothing
- 103 Senqu
- 118 Truworths
- 18 Uboutique
- 18 Jet

DEPARTMENT STORES

- 34 Woolworths

EYEWEAR & OPTOMETRISTS

- 18B Leana Oberholzer Optometrists
- 110 Spec Savers

FOOTWEAR

- 113 Shoe City
- 115 Tekkie Town

GROCERIES

- 1 Checkers
- 100 Pick n Pay

HAIR, HEALTH & BEAUTY

- 20 Clicks
- 124 Dis-Chem
- 125 TBC
- 44 Mane Street Barber
- 103A Sorbet
- 92 Hearing Aid Labs

HOME, DÉCOR & FURNITURE

- 42 Mr Price Home
- 102 Sheet Street

JEWELLERY & ACCESSORIES

- 73A American Swiss
- KIOSK 2 TBC

RESTAURANTS & FAST FOOD

- 66 John Dory's
- 72 Spur
- 71 Panarottis
- McDonalds
- 52 Mugg & Bean

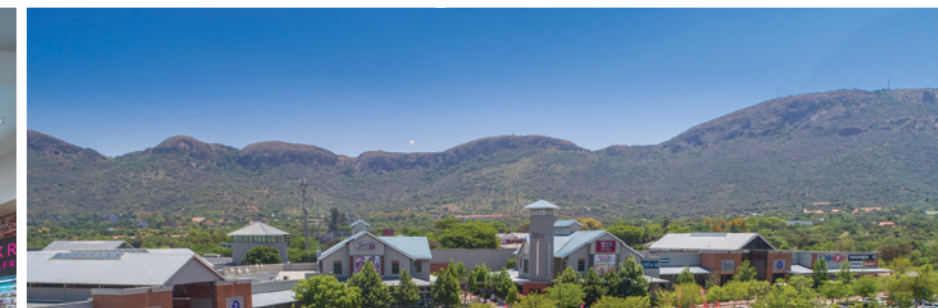
SPECIALITY

- 60 Absolute Pets
- 96 Oasis Water
- 76 Cape Union Mart
- 11 Brooklyn Biltong
- 50 Crazy Plastics
- 7 TBC
- 105A Gasland
- 120 GMR Security
- 2 Checkers Liquor
- 10 Multi Minutes
- 54 PostNet
- KIOSK 1 Twisp
- 107 The Crazy Store

SPORT & OUTDOOR

- 90 Mr Price Sport
- 116 Total Sports





MALL IMAGES



CONTACT

Magalies Blvd, Schoemansville, Hartbeespoort

GENERAL MANAGER

Heleen Erasmus

C +27 (0) 82 304 2124

W +27 (0) 12 253 9160

gm@villagemall.co.za

villagemall.co.za  

ASSET MANAGER

Sue le Roux

C +27 (0) 82 555 2187

W +27 (0) 12 361 7970

sue@moolmangroup.co.za

facebook.com/villagemallhartbeespoort



HARTBEEPOORT